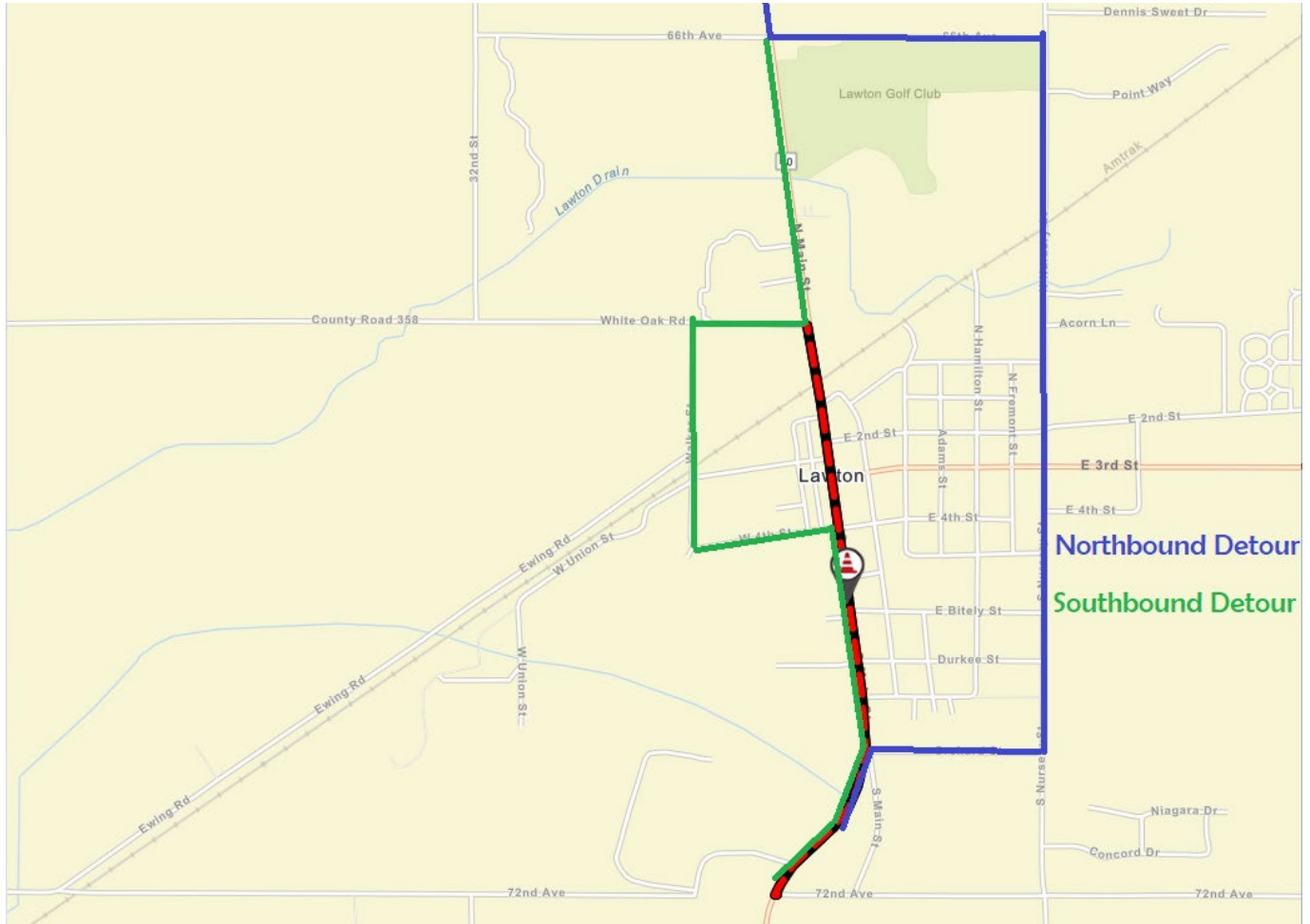


# Village of Lawton Detour Information

**NORTHBOUND DETOUR:** When entering town from M-40 going toward Paw Paw, please take Orchard up to Nursery until you reach 66<sup>th</sup> Avenue, which you can take back to M-40. **PLEASE NOTE: there is a School on this section of the detour and there are TWO FOUR WAY STOPS. One at Nursery and 3<sup>rd</sup> Street, and one at Nursery and 2<sup>nd</sup> Street. For the safety of our children, please watch for stop signs.**

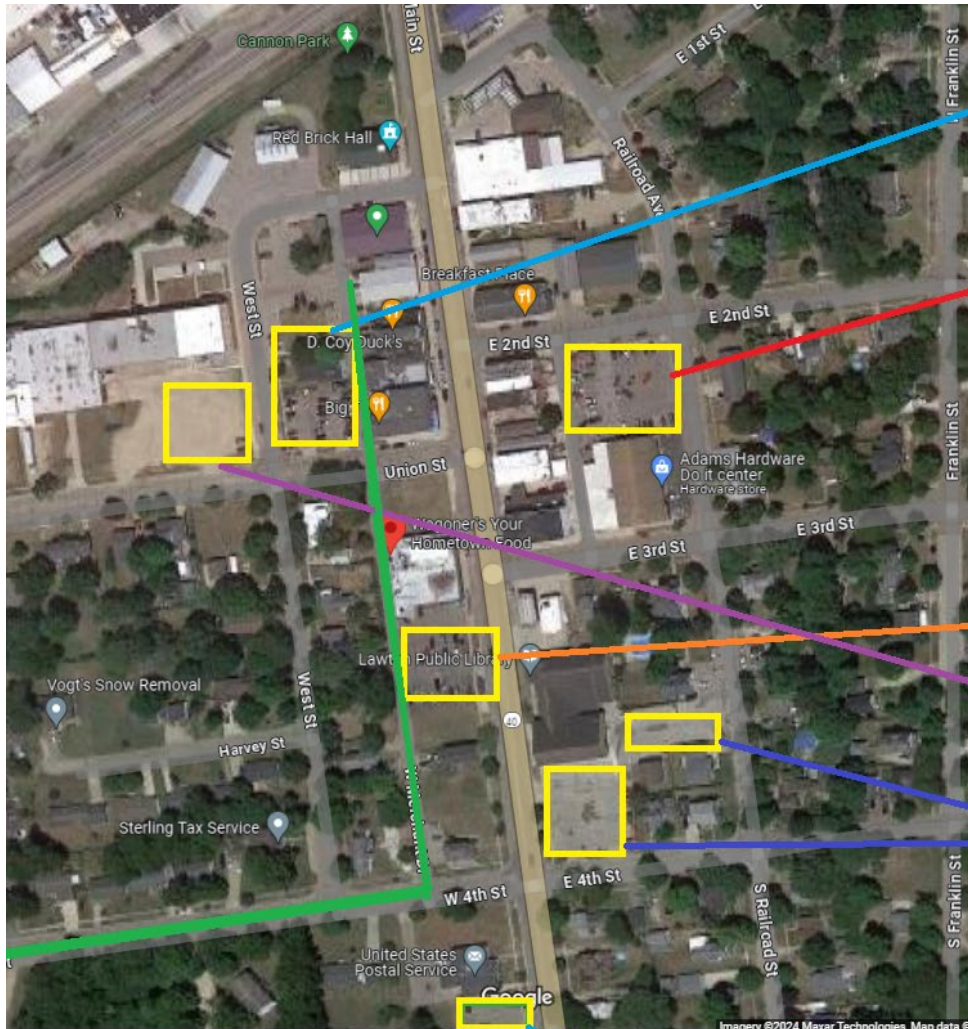
**SOUTHBOUND DETOUR:** When entering town from M-40 going toward Marcellus, take M-40 to White Oak, turn right onto West Street, then take West to Fourth, which will take you back to M-40. **PLEASE SEE MAP FOR HOW TO GET TO BUSINESSES**



**\*\*Please note, part of the detour on the South end of town will be under construction later this summer, so this detour may be updated as the summer goes on.**

# **BUSINESSES ARE OPEN DURING CONSTRUCTION!!!!**

How to get to the businesses downtown from the detour and where to park:



Parking for: Big T., D. Coy Duck's, Vineyard Cafe, Lawton Boot Camp, FiveStar Realty, and Red Brick Hall \*\*

Parking for: Moo Moo's Ice Cream, Adam's Hardware, The Breakfast Place, Longship Brewing, Consumer's Credit Union (ATM AVAILABLE FOR WALKUP ONLY), Jaspere's Pizza, Motter Insurance, Marcelletti Law Firm, Halftime Liquor, Thornton Insurance, Third Street Salon, and overflow Parking.

Parking for: Wagoner's Grocery Store \*\*

Element Salon Parking

Parking for: Village Hall, Lawton Public Library (Drive through bookdrop available), Fire Department and overflow parking.

USPS Parking \*\*

\*\* To get to these locations, please follow the Southbound Detour as marked. For ALL businesses on this side of the road with the exception of the Post Office, please take a right on W Merchant Drive (alleyway) which will give you access to parking for these places. For the Post office follow the detour as normal, W 4th to M40 Southbound.